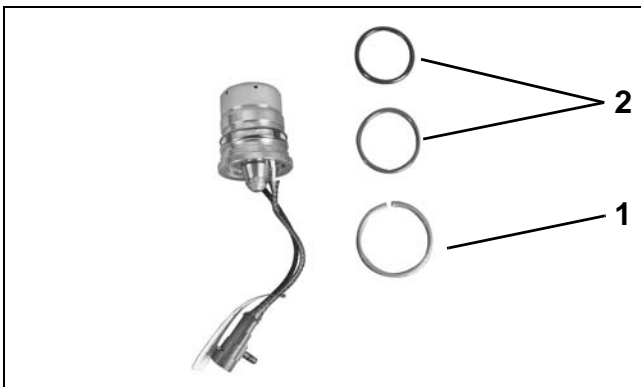


tor filter. Install new crush ring and O-rings. Lubricate O-rings with *STP⁺ Oil Treatment*.



1. Adaptor

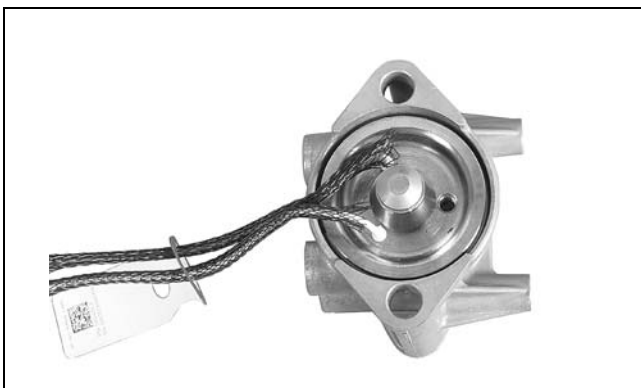
002196



1. Crush ring
2. O-rings

002317

Install injector into mount housing. Press on injector face until injector seats in mount housing.



002318

Installation

NOTICE All injectors must be installed in the correct cylinder by serial number. Improper injector installation can result in powerhead failure.

Installation of a replacement injector requires that coefficient data for the new injector is uploaded to the *EMM*.

Coefficient data for some replacement injectors is supplied on a computer disk shipped with the injector. If a disk is not included with the injector, coefficient data can be downloaded from the *Evinrude/Johnson* dealer website. Refer to the instructions provided with the injector kit.

Upload Coefficient Files to *EMM*

IMPORTANT: If using Diagnostic Power Supply Tool, P/N 587005, to supply power to the *EMM*, use Accessory Power Cable Kit, P/N 5008092, to connect an external 12 volt battery to the Power Supply Tool.

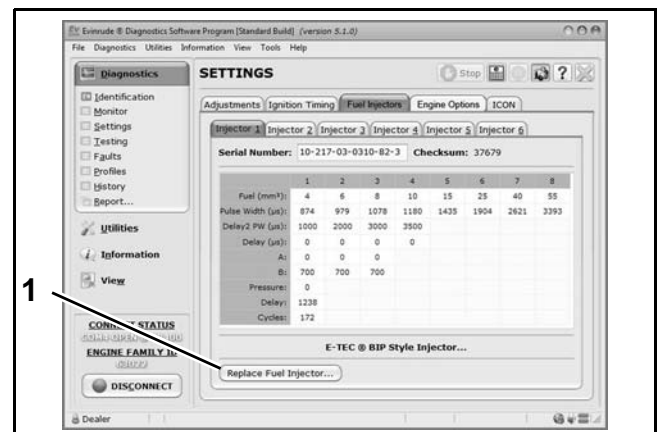
If the internal batteries of the Power Supply Tool have a low voltage condition the *EMM* could turn OFF during the coefficient upload, resulting in a failed update.

Use the *Evinrude Diagnostics* software *Settings* screen to upload the coefficient file to the *EMM*.

Select the *Injectors* tab.

Select the cylinder tab for injector being replaced.

Select the *Replace Injector* button.



1. "Replace Injector" button

008568A